

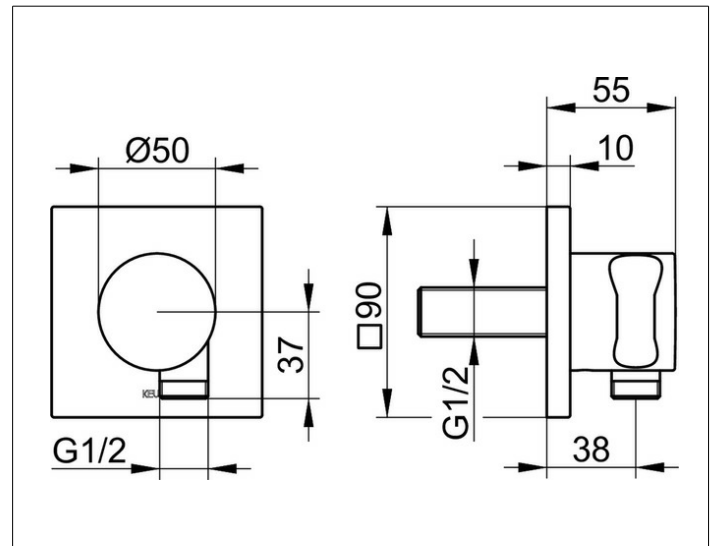
IXMO

59592010002 Wall outlet for shower hose with hand shower bracket DN 15

PRODUCT



DRAWING



PRODUCT ATTRIBUTES

for shower hoses with fitted conical end brackets,
with square decorative disc,
intrinsically safe against backflow

SURFACE

chrome-plated

DIMENSION

eckig

SPECIFICATIONS

KEUCO IXMO wall outlet for shower hose
with hand shower bracket DN 15, 59592010002
chrome-plated wall outlet for shower hose
with hand shower bracket, with square rosette
and integrated shower bracket for shower hoses
with fitted conical end brackets,
e.g KEUCO shower hose 54995...,
with backflow preventer, freely positionable,
rosette 90 x 90 mm, 10 mm thick,
hose connection G1/2 inch, total depth 55 mm